



# JIZZAX VILOYAT STATISTIKA BOSHQARMASI



## NOMINAL HISOBLANGAN O'RTACHA OYLIK ISH HAQI

*qishloq xo'jaligi va kichik tadbirkorlik  
subyektlarisiz, dastlabki ma'lumotlar*

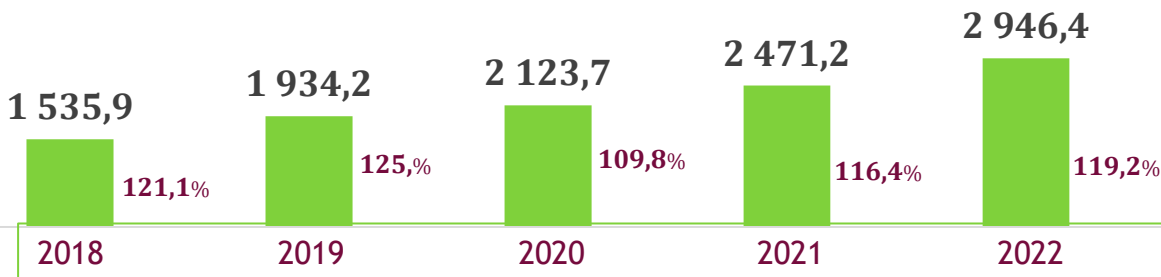
*2022 - yil yanvar-dekabr*



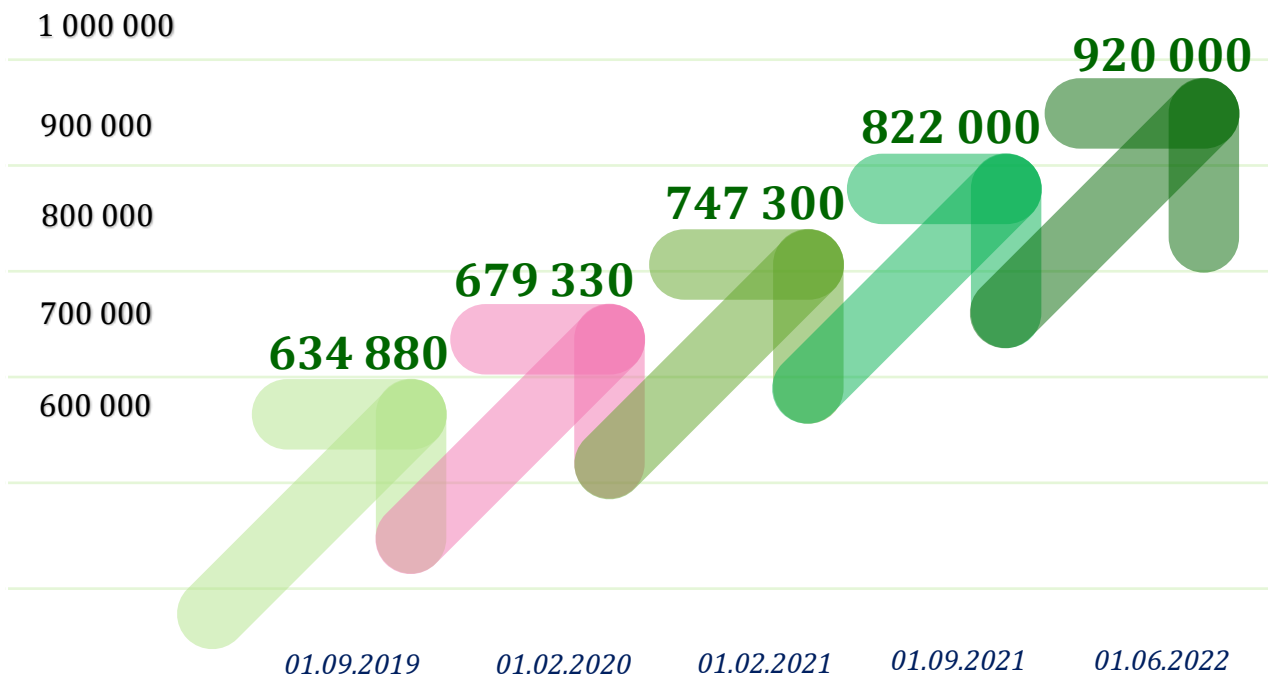
# JIZZAX VILOYAT STATISTIKA BOSHQARMASI

## O'rtacha oylik ish haqining yillar kesimidagi dinamikasi

yanvar-dekabr o'sish darajasi o'tgan yilning mos davriga nisbatan, ming so'm



## Mehnatga haq to'lashning eng kam miqdori dinamikasi, so'mda



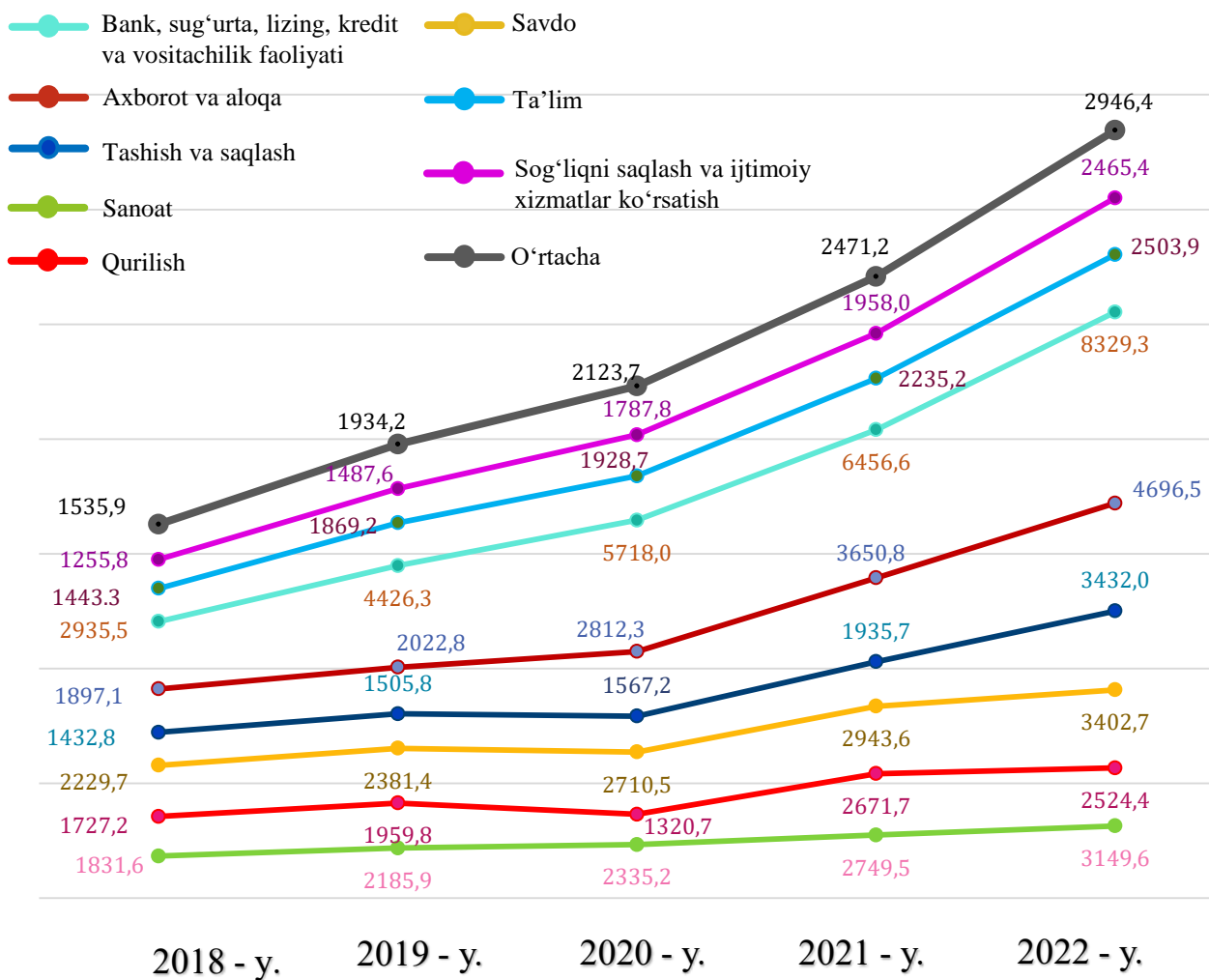
**Ma'lumot uchun:** Mehnatga haq to'lashning eng kam miqdoriga 2022 - yil 1 - iyundan o'zgartirish kiritildi hamda **920,0 ming so'mga** yetkazildi.

2022 - yil yanvar-dekabr oylari uchun o'rtacha oylik ish haqi ko'rsatkichini shakllantirishda qishloq xo'jaligi va kichik tadbirkorlik subyektlari **hisobga olinmagan**, chunki fermer xo'jaliklari hamda kichik tadbirkorlik subyektlari **yilda bir marta** hisobot taqdim etishi belgilangan.

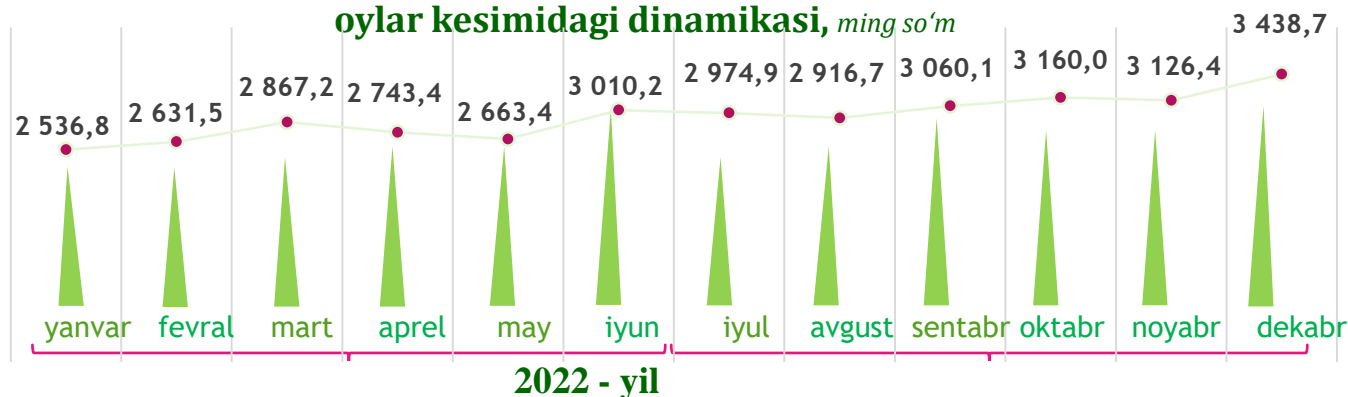
Yuridik shaxs maqomiga ega bo'lgan korxonalar va tashkilotlarda ishlovchi xodimlarning o'rtacha oylik nominal hisoblangan ish haqlari (keyingi o'rinlarda – o'rtacha oylik ish haqi) har bir iqtisodiy faoliyat turlarida turlicha farqlanadi.

O'rtacha oylik nominal hisoblangan ish haqi tarkibiga qo'shimcha to'lovlar, mukofot pullari, rag'batlantiruvchi to'lovlar, kompensatsiya va ishlamagan vaqti uchun to'lovlar, shuningdek, jismoniy shaxslardan olinadigan daromad solig'i va kasaba uyushmasiga ajratmalar kiradi.

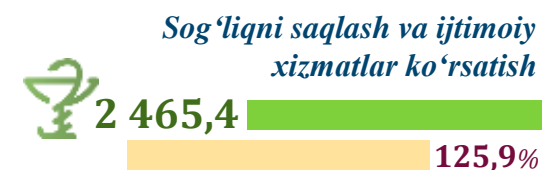
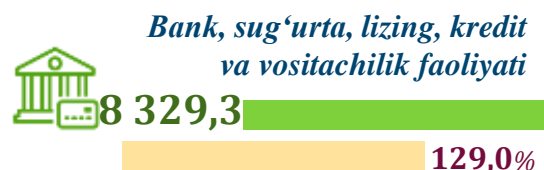
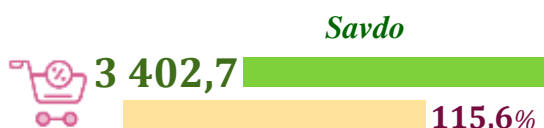
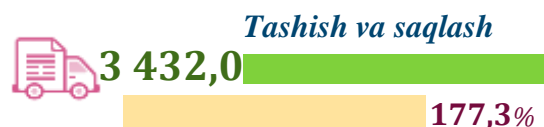
## O'rtacha oylik ish haqining tarmoqlar bo'yicha o'zgarish dinamikasi, yanvar-dekabr, ming so'm



## 2021-2022 - yillarda o'rtacha oylik ish haqining oylar kesimidagi dinamikasi, ming so'm



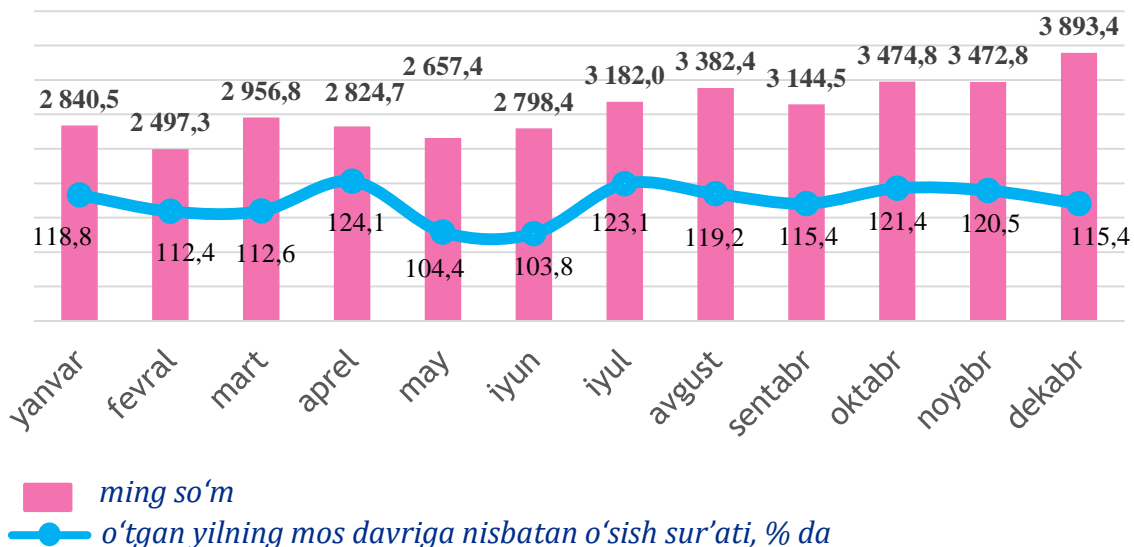
## Iqtisodiy faoliyat turlari kesimida o'rtacha oylik ish haqi, ming so'm



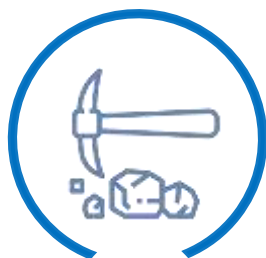
2022 - yil yanvar-dekabr oylarida iqtisodiy faoliyat turlari bo'yicha o'rtacha oylik ish haqining eng baland ko'rsatkichi – bank, sug'urta, lizing, kredit va vositachilik faoliyati sohasiga to'g'ri kelib, o'tgan yilning mos davriga nisbatan o'sish darajasi **129,0 %** ni tashkil etdi.

Shuningdek, tashish va saqlash sohasi **177,3 %**, axborot va aloqa sohasi **128,6 %**, sog'liqni saqlash va ijtimoiy xizmatlar ko'rsatish sohasi **125,9 %**, sanoat sohasi **114,5 %**, savdo sohasi **115,6 %**, ta'lim sohasida **112,0 %** ga o'sganligini ko'rishimiz mumkin.

## SANOAT SOHASIDA O‘RTACHA OYLIK ISH HAQI



### Sanoatning asosiy tarmoqlari bo‘yicha o‘rtacha oylik ish haqi, ming so‘m



**3 255,4**

Tog‘-kon sanoati va  
ochiq konlarni ishlash



**2 817,9**

Ishlab chiqarish  
sanoati



**1 980,1**

Suv bilan ta‘minlash,  
kanalizatsiya tizimi,  
chiqindilarni yig‘ish  
va utilitatsiya qilish

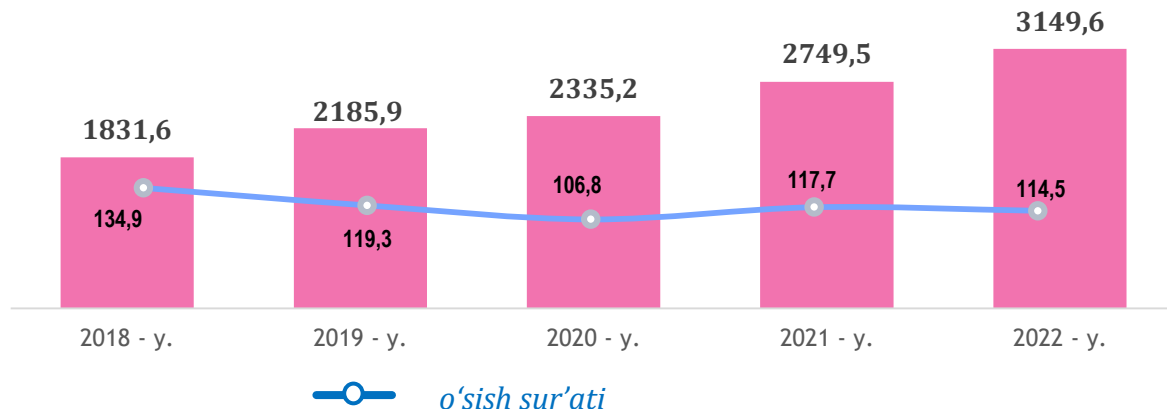


**5 144,7**

Elektr, gaz, bug‘  
bilan ta‘minlash va  
havoni konditsiyalash

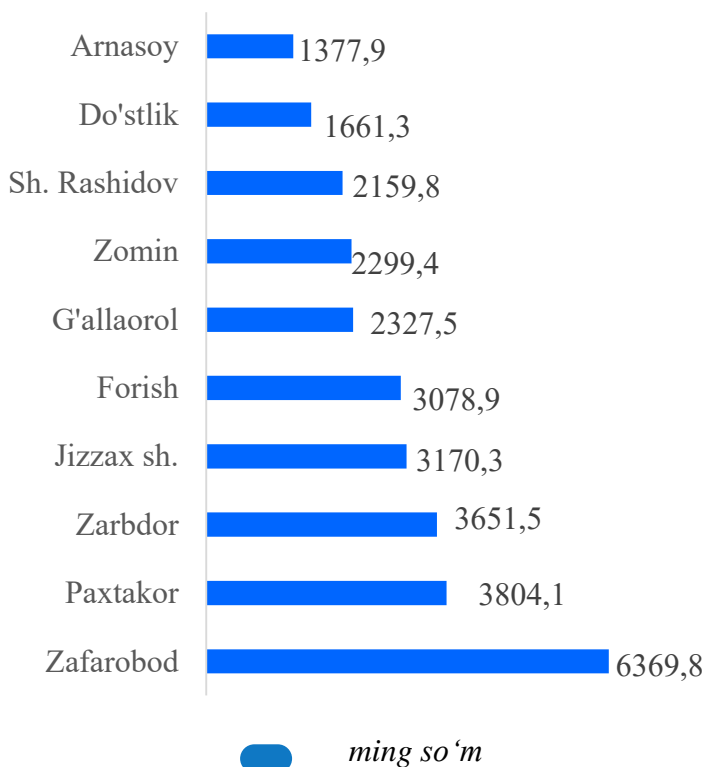
Sanoatning asosiy tarmoqlari bo‘yicha o‘rtacha oylik ish haqining eng yuqori ko‘rsatkichi elektr, gaz, bug‘ bilan ta‘minlash va havoni konditsiyalash (**5 144,7 ming so‘m**), tog‘-kon sanoati va ochiq konlarni ishlash tarmog‘i (**3 255,4 ming so‘m**), ishlab chiqarish sanoati (**2 817,9 ming so‘m**) da kuzatildi.

## O'rtacha oylik ish haqining yillar kesimidagi dinamikasi, ming so'm

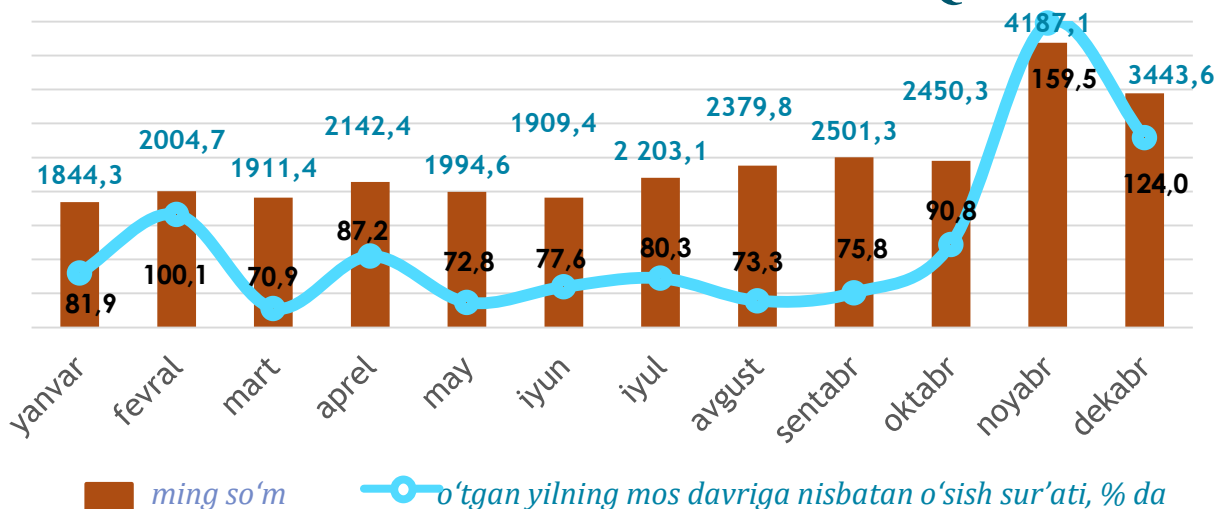


Sanoat iqtisodiy faoliyat turi bo'yicha o'rtacha oylik ish haqining eng yuqori ko'rsatkichi Zafarobod tumani (**6369,8 ming so'm**), Paxtakor tumani (**3804,1 ming so'm**) Zarbdor tumani (**3651,5 ming so'm**), Jizzax shahrida (**3170,3 ming so'm**) hamda Forish tumanida (**3078,9 ming so'm**) kuzatildi.

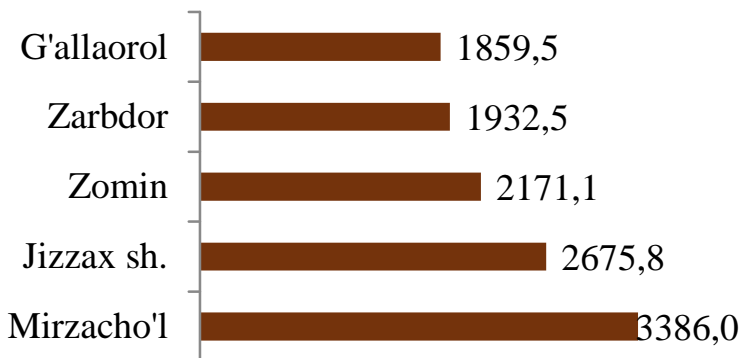
## Hududlar kesimida



## QURILISH SOHASIDA O'RTACHA OYLIK ISH HAQI

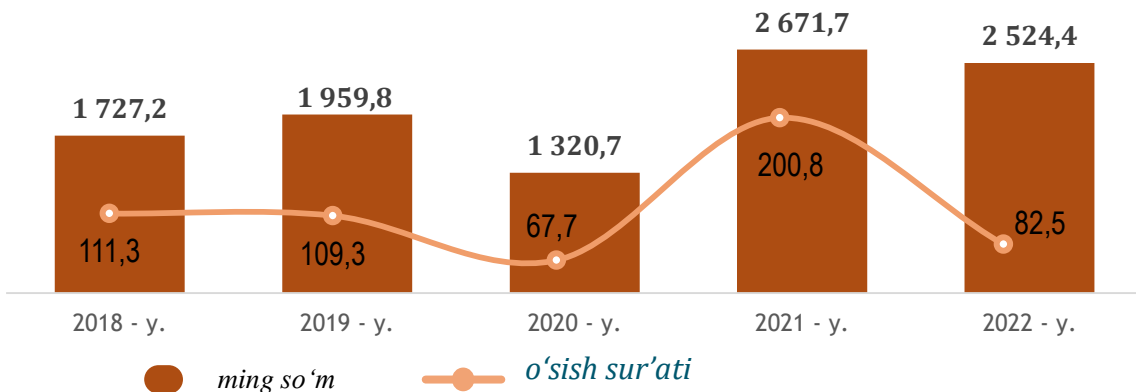


### Hududlar kesimida



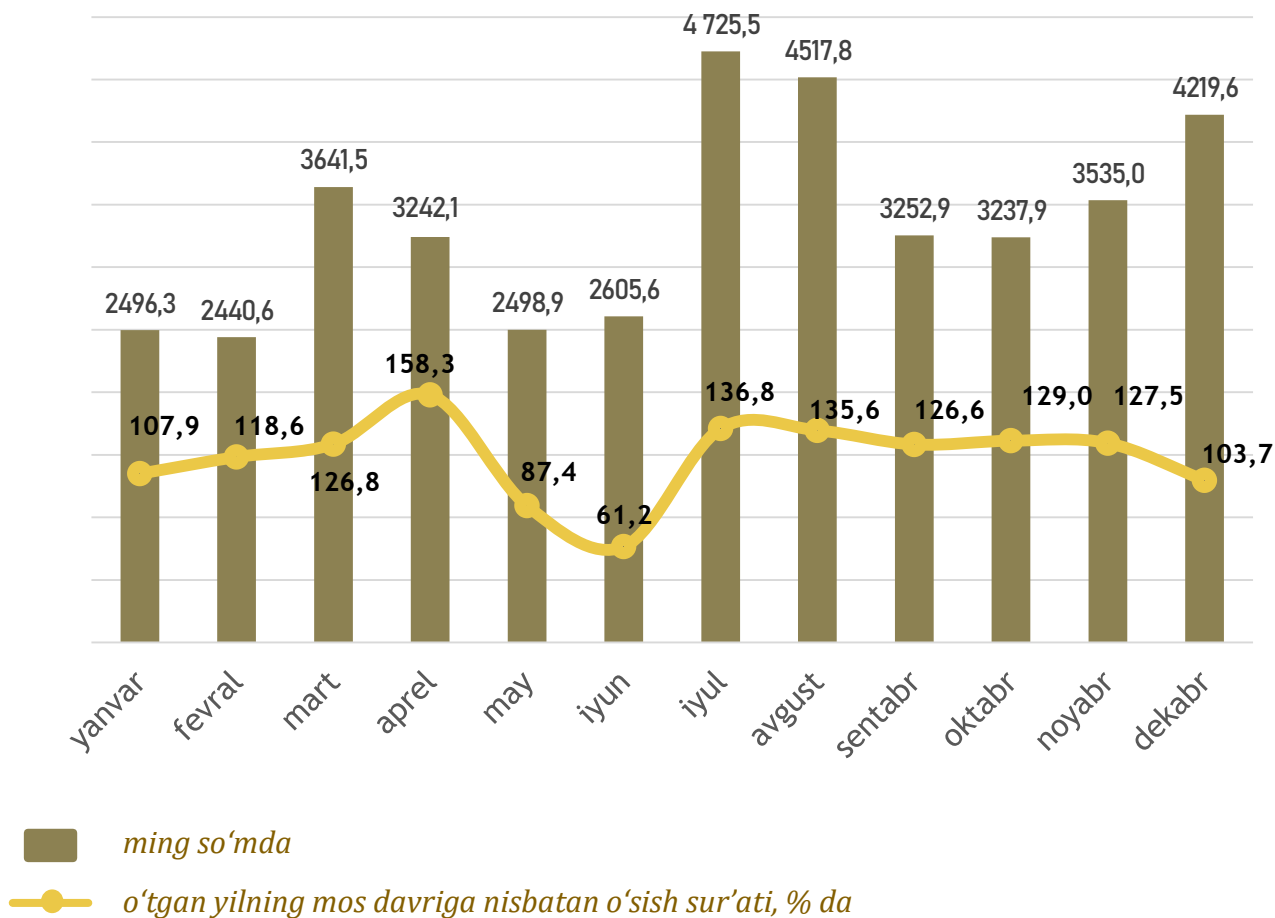
Qurilish faoliyat turi bo'yicha o'rtacha oylik ish haqining eng yuqori ko'rsatkichi Mirzacho'l tumani (**3386,0 ming so'm**), Jizzax shahri (**2675,8 ming so'm**), Zomin tumani (**2171,1 ming so'm**)da qayd etildi.

### O'rtacha oylik ish haqining yillar kesimidagi dinamikasi, ming so'm



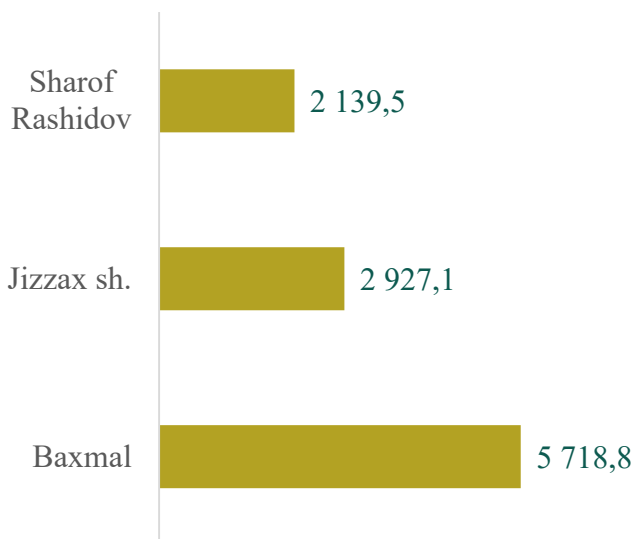


## SAVDO SOHASIDA O‘RTACHA OYLIK ISH HAQI





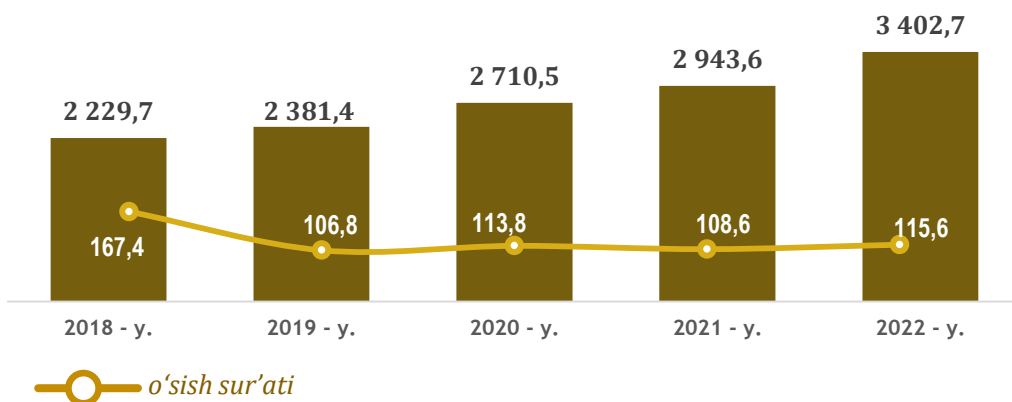
## Hududlar kesimida



● ming so'm



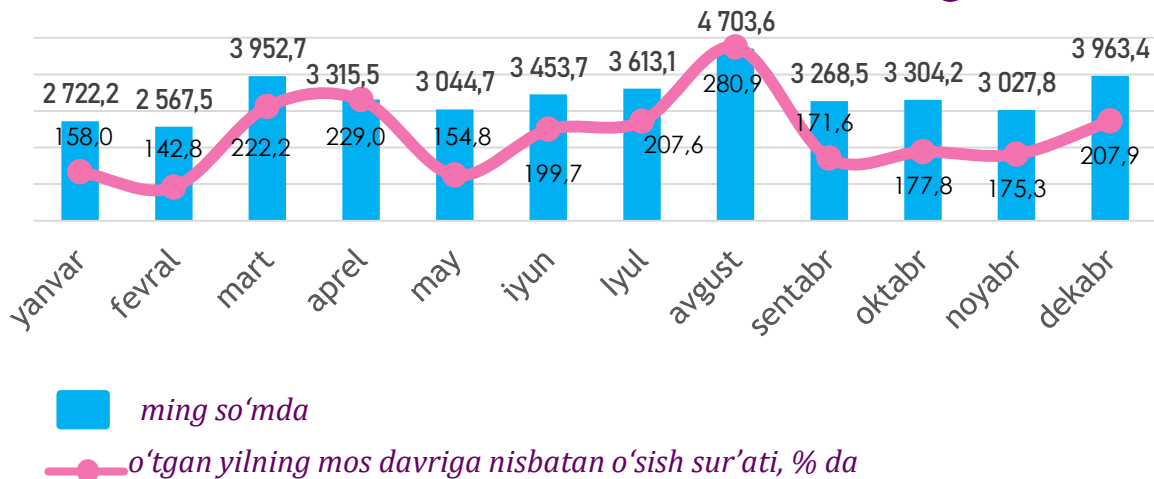
## O'rtacha oylik ish haqining yillar kesimidagi dinamikasi, ming so'm



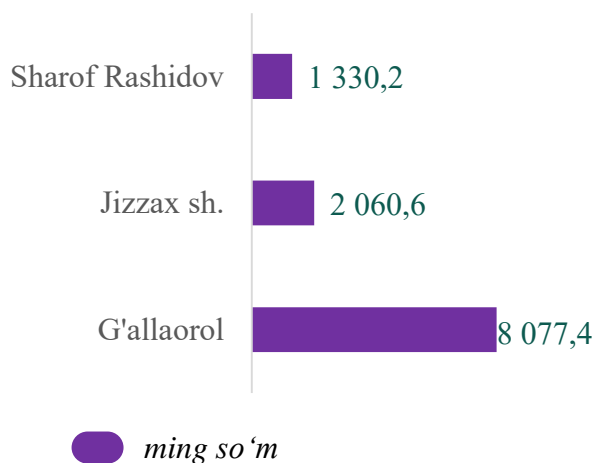
—○— o'sish sur'ati

Savdo faoliyat turi bo'yicha o'rtacha oylik ish haqining eng yuqori ko'rsatkichi Baxmal tumani (**5718,8 ming so'm**), Jizzax shahri (**2927,1 ming so'm**), hamda Sharof Rashidov tumanida (**2139,5 ming so'm**) qayd etildi.

## TASHISH VA SAQLASH SOHASIDA O'RTACHA OYLIK ISH HAQI

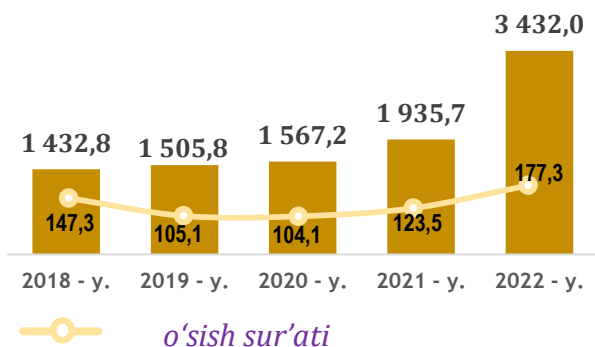


## HUDUDLAR KESIMIDA

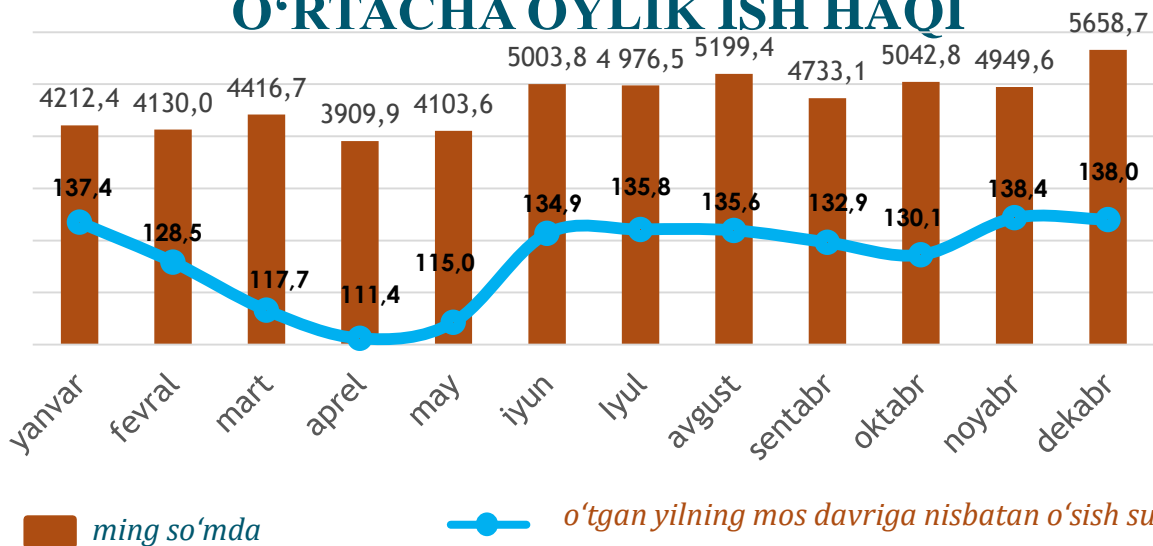


Tashish va saqlash iqtisodiy faoliyat turi bo'yicha o'rtacha oylik ish haqining eng yuqori ko'rsatkichi G'allaorol tumani (**8077,4 ming so'm**) Jizzax shahrida (**2060,6 ming so'm**) hamda Sharof Rashidov tumani (**1330,2 ming so'm**)da kuzatildi..

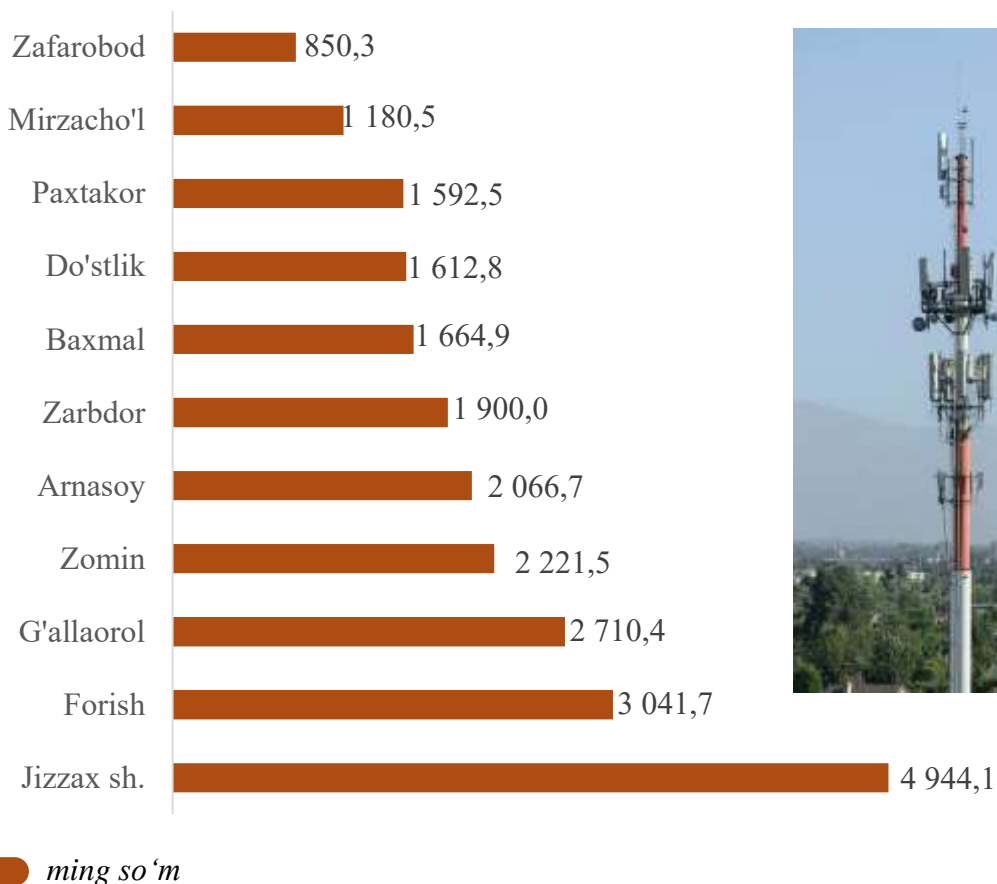
## O'rtacha oylik ish haqining yillar kesimidagi dinamikasi, ming so'm



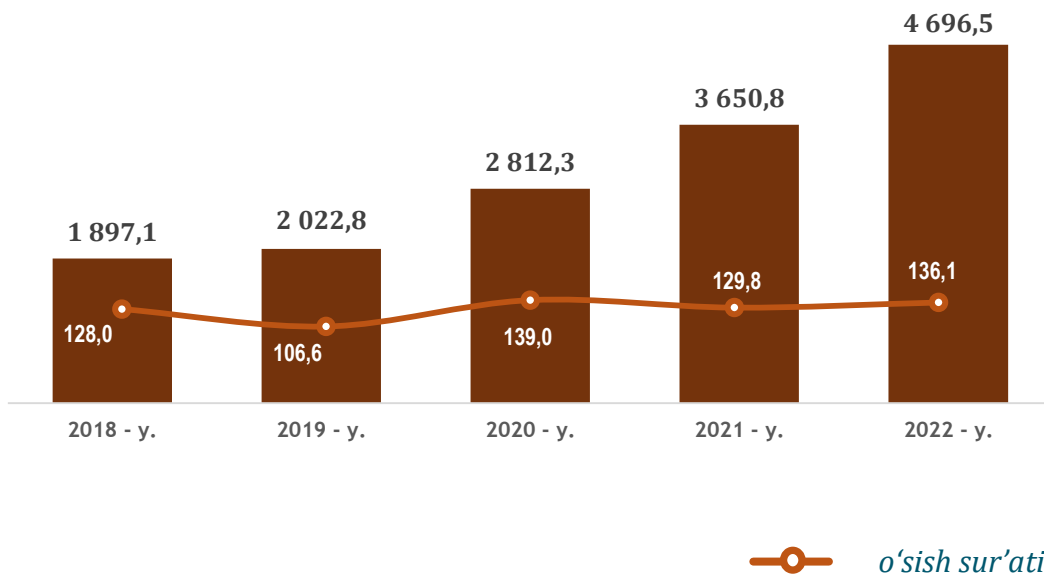
## AXBOROT VA ALOQA SOHASIDA O'RTACHA OYLIK ISH HAQI



### Hududlar kesimida

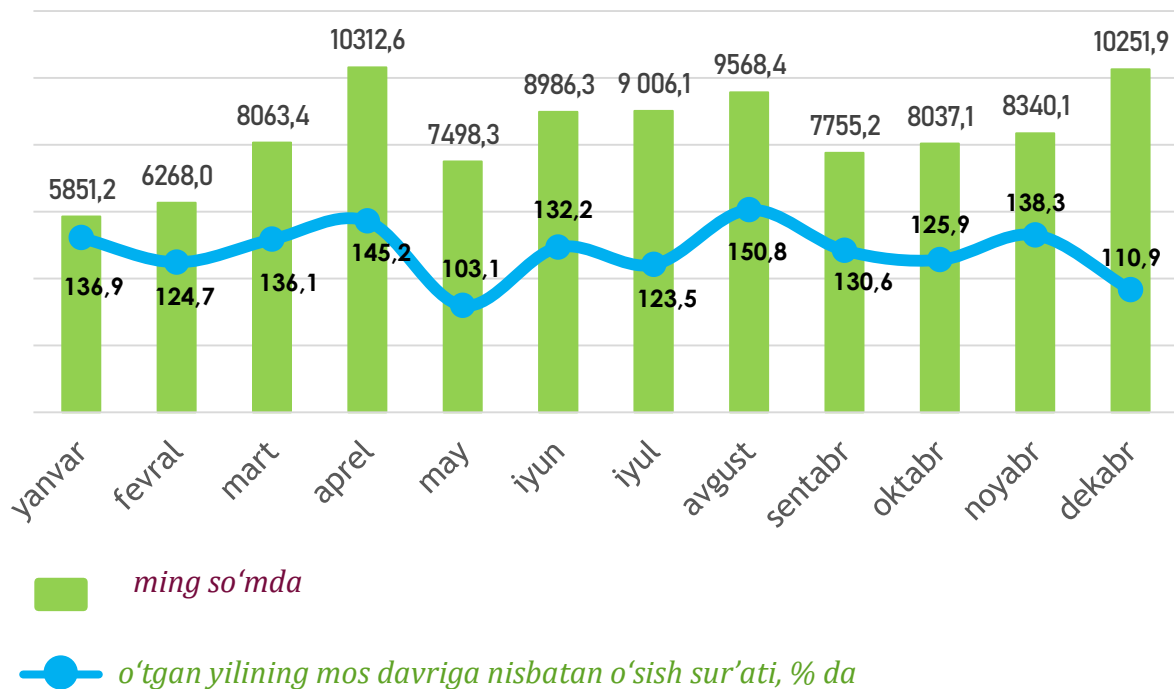


## O'rtacha oylik ish haqining yillar kesimidagi dinamikasi, *ming so'm*

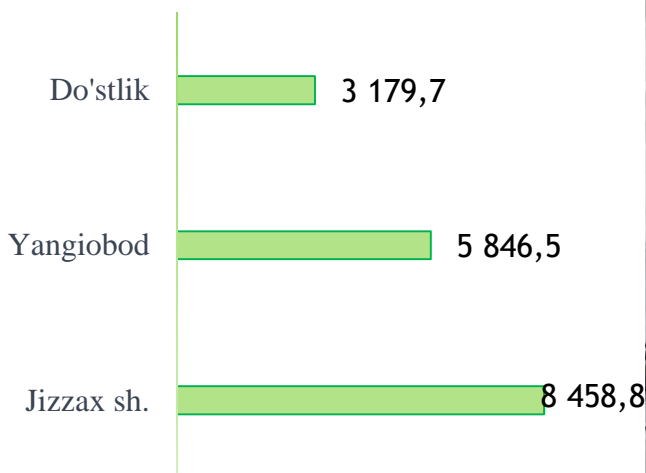


Axborot va aloqa faoliyat turi bo'yicha o'rtacha oylik ish haqining eng yuqori ko'rsatkichi Jizzax shahri (**4944,1 ming so'm**), Forish tumani (**3041,7 ming so'm**) G'allaorol tumani (**2710,4 ming so'm**) hamda Zomin tumai (**2221,5 ming so'm**)da kuzatildi.

## BANK, SUG'URTA, LIZING, KREDIT VA VOSITACHILIK SOHASIDA O'RTACHA OYLIK ISH HAQI



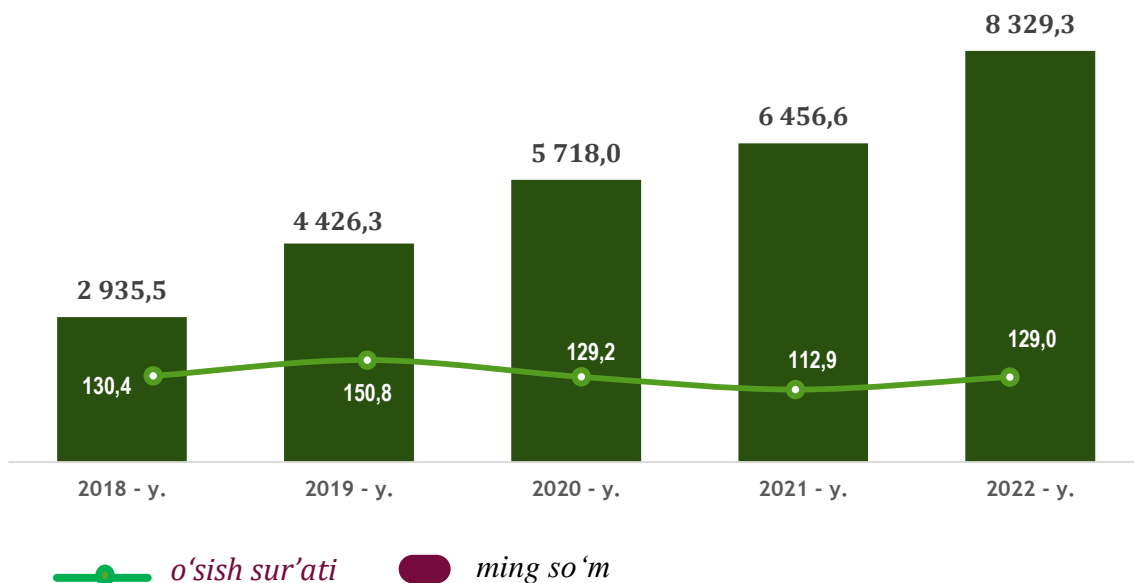
### Hududlar kesimida



■ ming so'mda



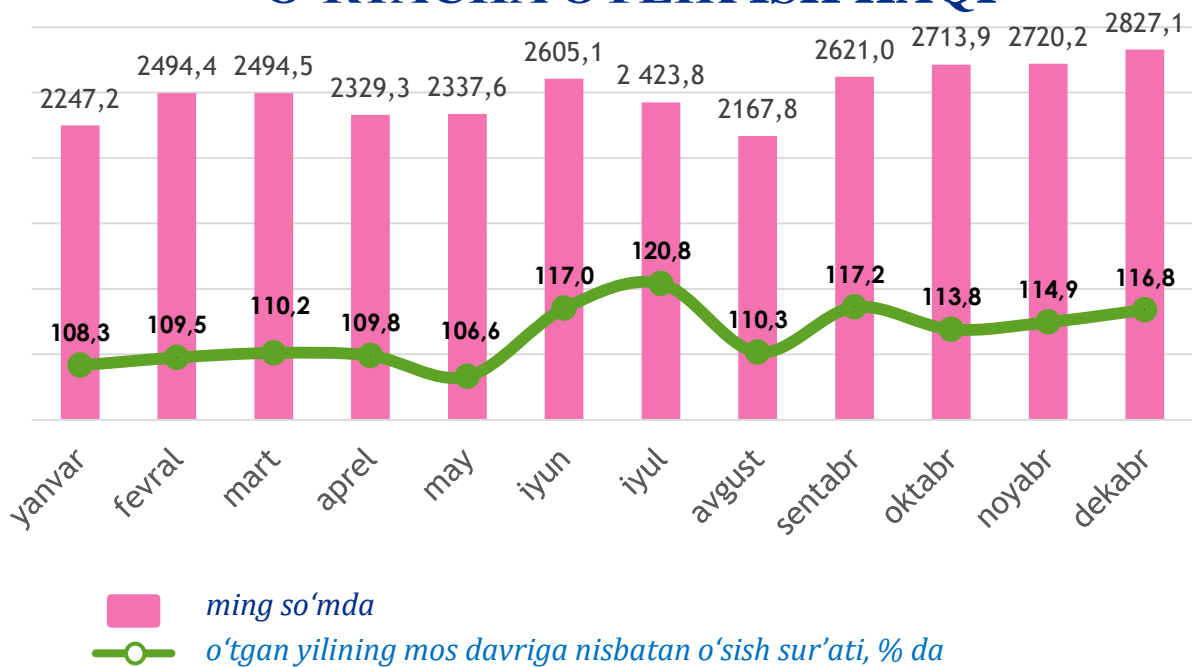
## O'rtacha oylik ish haqining yillar kesimidagi dinamikasi, *ming so'm*



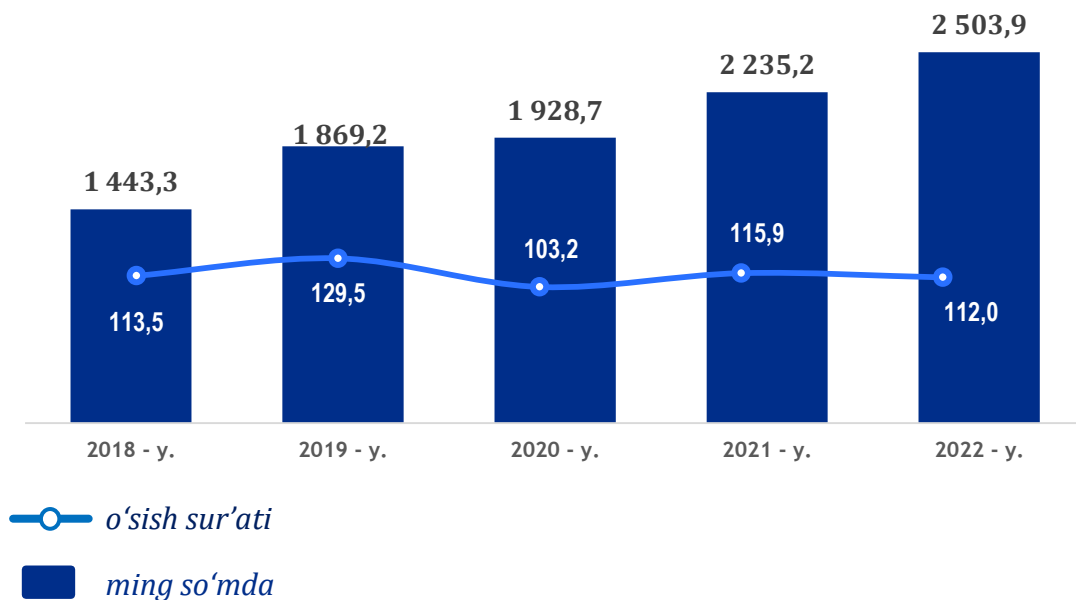
Bank, sug'urta, lizing, kredit va vositachilik faoliyati iqtisodiy faoliyat turi bo'yicha o'rtacha oylik ish haqining ko'rsatkichi Jizzax shahri (**8458,8 ming so'm**), Yangiobod tumani (**5846,5 ming so'm**), hamda Do'stlik tumanlari (**3179,7 ming so'm**) da kuzatildi.



## TA'LIM SOHASIDA O'RTACHA OYLIK ISH HAQI



### O'rtacha oylik ish haqining yillar kesimidagi dinamikasi, ming so'm

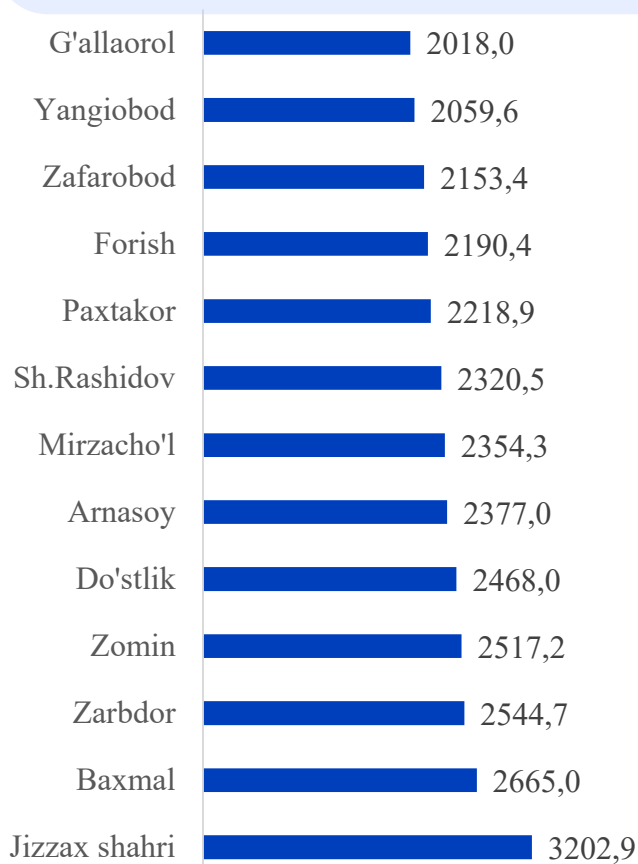




## Hududlar kesimida

Ta'lim sohasi bo'yicha bir qator tumanlarda o'rtacha oylik nominal hisoblangan ish haqining viloyat o'rtacha oylik ish haqiga nisbatan yuqori ko'rsatkichi Jizzax shahri (**3202,9 ming so'm**), Baxmal tumani (**2665,0 ming so'm**), Zarbdor tumani (**2544,7 ming so'm**)da kuzatildi.

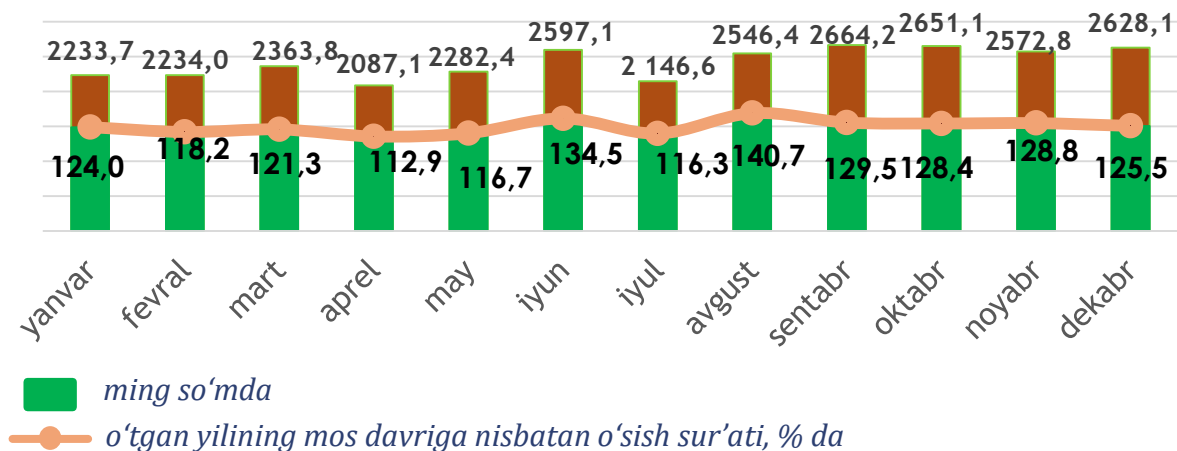
Shu bilan bir qatorda, viloyatning ba'zi tumanlari ta'lim sohasidagi o'rtacha oylik nominal hisoblangan ish haqi ko'rsatkichi viloyat darajasidan past bo'ldi. G'allaorol tumanida (**2018,0 ming so'm**), Yangiobod tumanida (**2059,6 ming so'm**), Zafarobod tumanida (**2153,4 ming so'm**), Forish tumanida (**2190,4 ming so'm**) hamda Paxtakor tumanida (**2218,9 ming so'm**) qayd etildi.



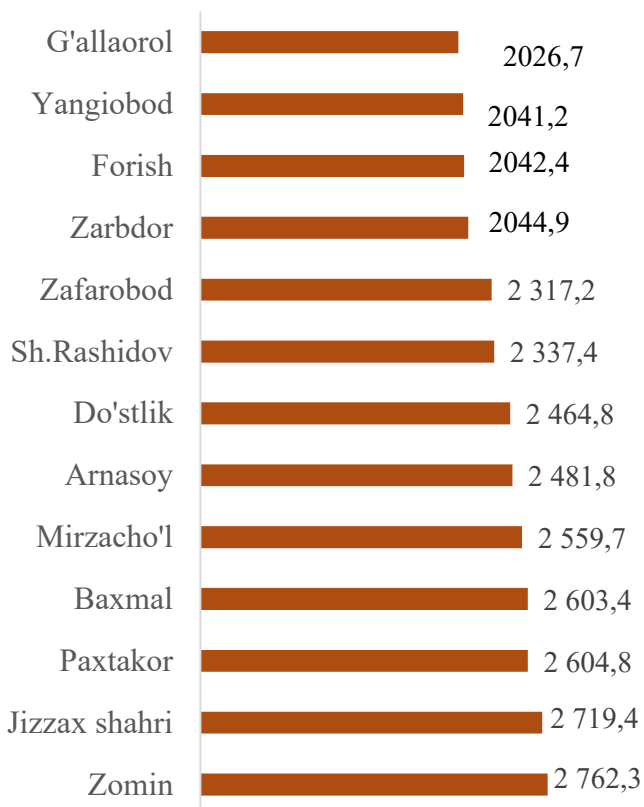
 ming so'm



## SOG‘LIQNI SAQLASH VA IJTIMOIIY XIZMATLAR KO‘RSATISH SOHASIDA O‘RTACHA OYLIK ISH HAQI



### Hududlar kesimida

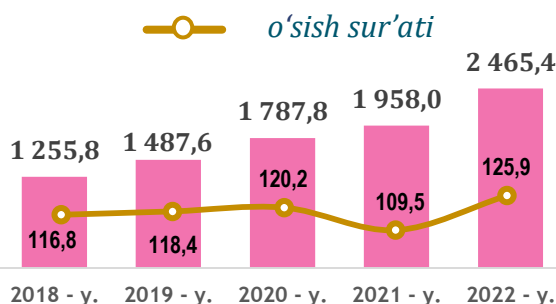


ming so‘m

Sog‘liqni saqlash va ijtimoiy xizmatlar ko‘rsatish bo‘yicha bir qator tumanlarda o‘rtacha oylik nominal hisoblangan ish haqining viloyat o‘rtacha oylik ish haqiga nisbatan yuqori ko‘rsatkichi Zomin (**2762,3 ming so‘m**), Jizzax shahri (**2719,4 ming so‘m**), Paxtakor (**2604,8 ming so‘m**) da kuzatildi.

Shu bilan bir qatorda, viloyatning ba‘zi tumanlari ta‘lim sohasidagi o‘rtacha oylik nominal hisoblangan ish haqi ko‘rsatkichi viloyat darajasidan past bo‘ldi. G‘allaorol (**2026,7 ming so‘m**), Yangiobod (**2041,2 ming so‘m**), hamda Forish (**2042,4 ming so‘m**) tumanlarida qayd etildi.

### O‘rtacha oylik ish haqining yillar kesimidagi dinamikasi, ming so‘m



## DEMOGRAFIYA VA MEHNAT STATISTIKASI BO'LI MI

**Nominal hisoblangan ish haqi** – ma'lum bir davr (soat, oy, yil) mobaynida xodim tomonidan ishlab chiqarilgan mahsulot (bajarilgan ish yoki ko'rsatilgan xizmat) evaziga ish beruvchilar tomonidan, amaldagi qonun hujjatlariga asoslangan holda soliq va boshqa to'lovlarni o'z ichiga oluvchi yollanma xodimning mehnatiga haq to'lash tarzida jismoniy shaxsga pul shaklida hisoblangan daromadlardan iborat.



Tel.: 72 222-81-39